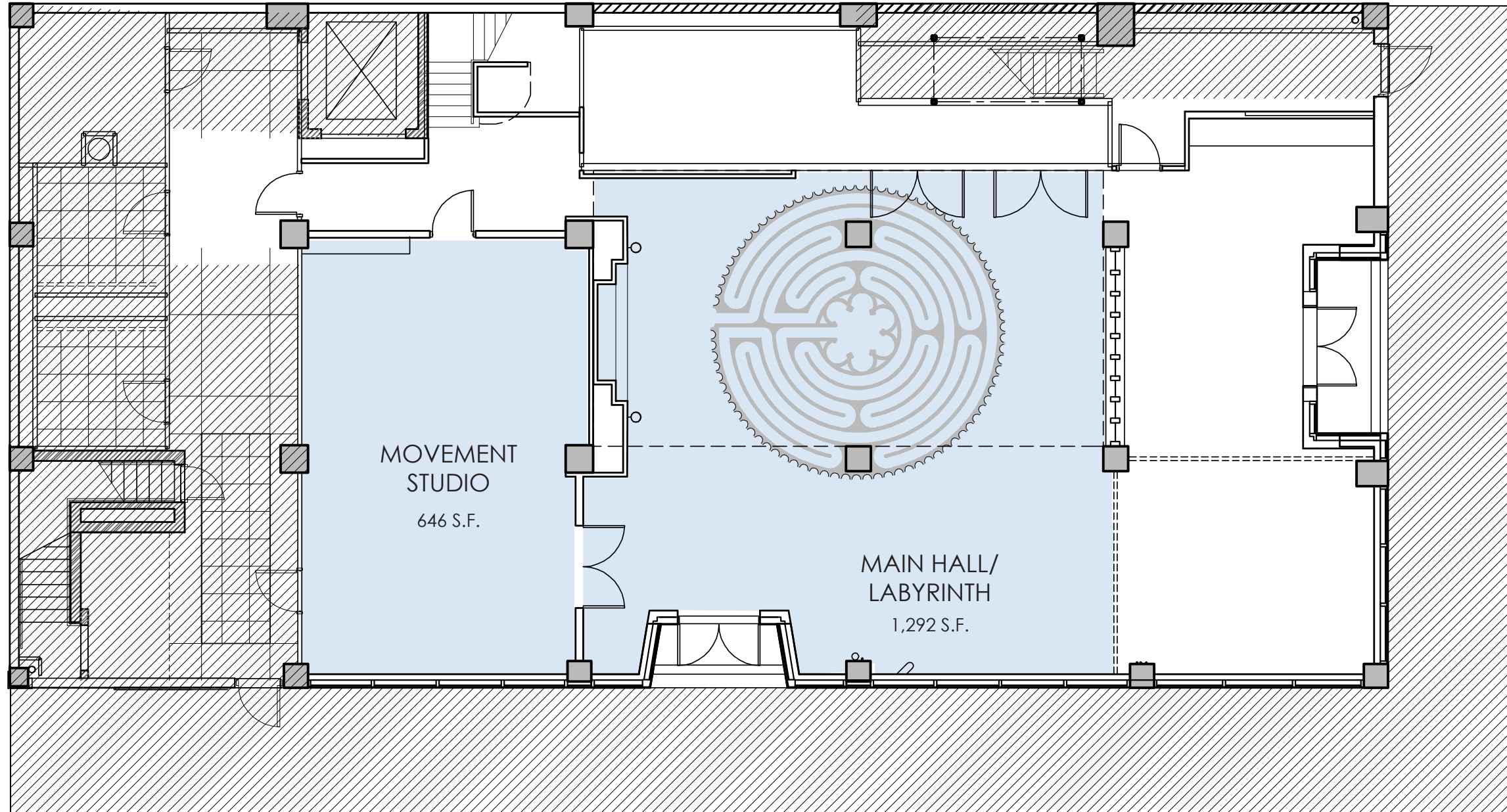




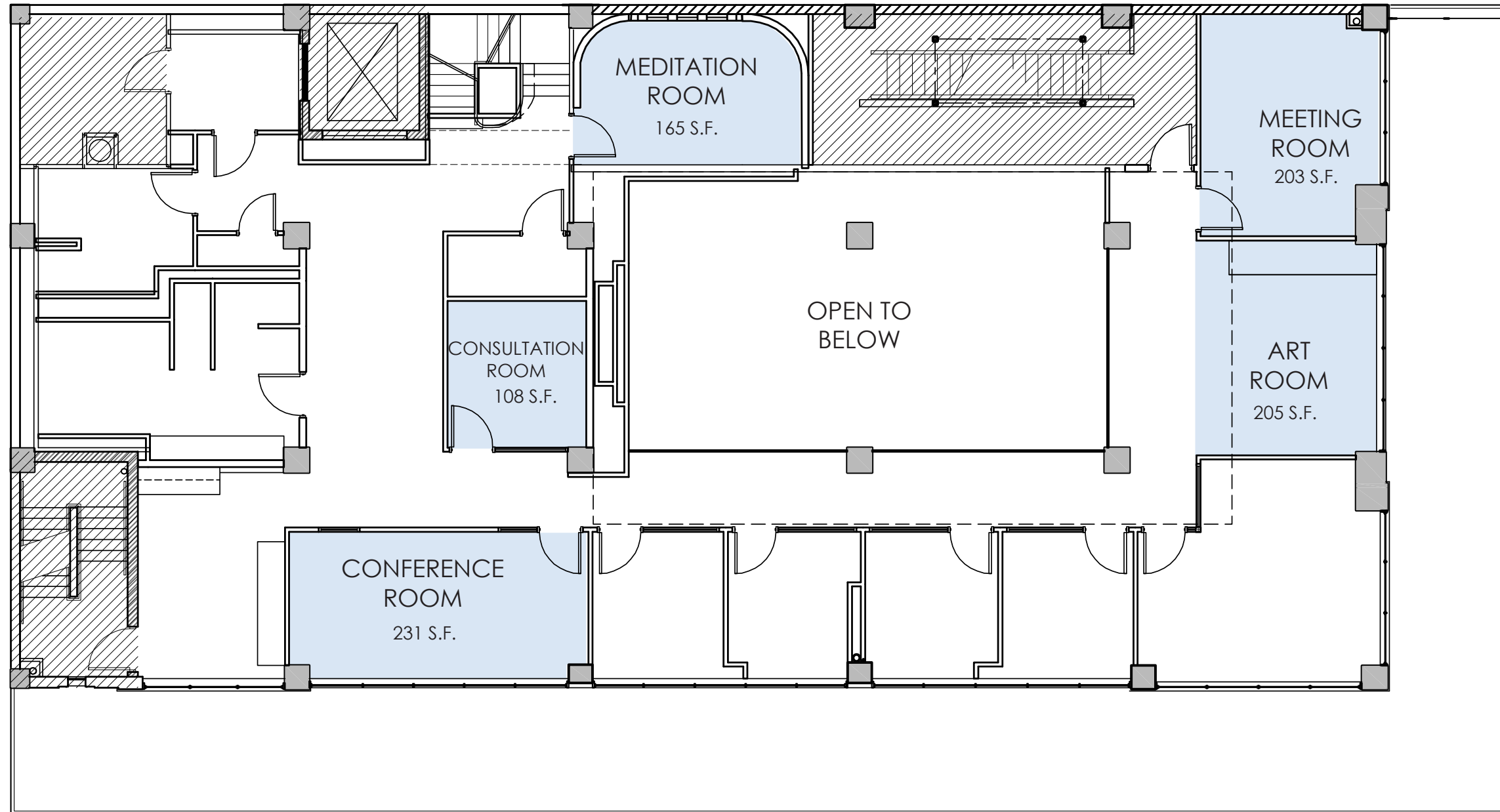
HINES CENTER



FIRST FLOOR								
ROOM	SQUARE FOOTAGE	DIMENSIONS	THEATRE	ROUNDS 72" 10 PER	RECEPTION	CLASSROOM	BOARD	U-SHAPE
Main Hall/Labyrinth	1,292 S.F.	38' 8" x 36' 8"	81 (A)/107 (B)	80	120	40	24	20
Movement Studio	646 S.F.	20' 0" x 31' 10"	40	40	60	20	24	18



HINES CENTER

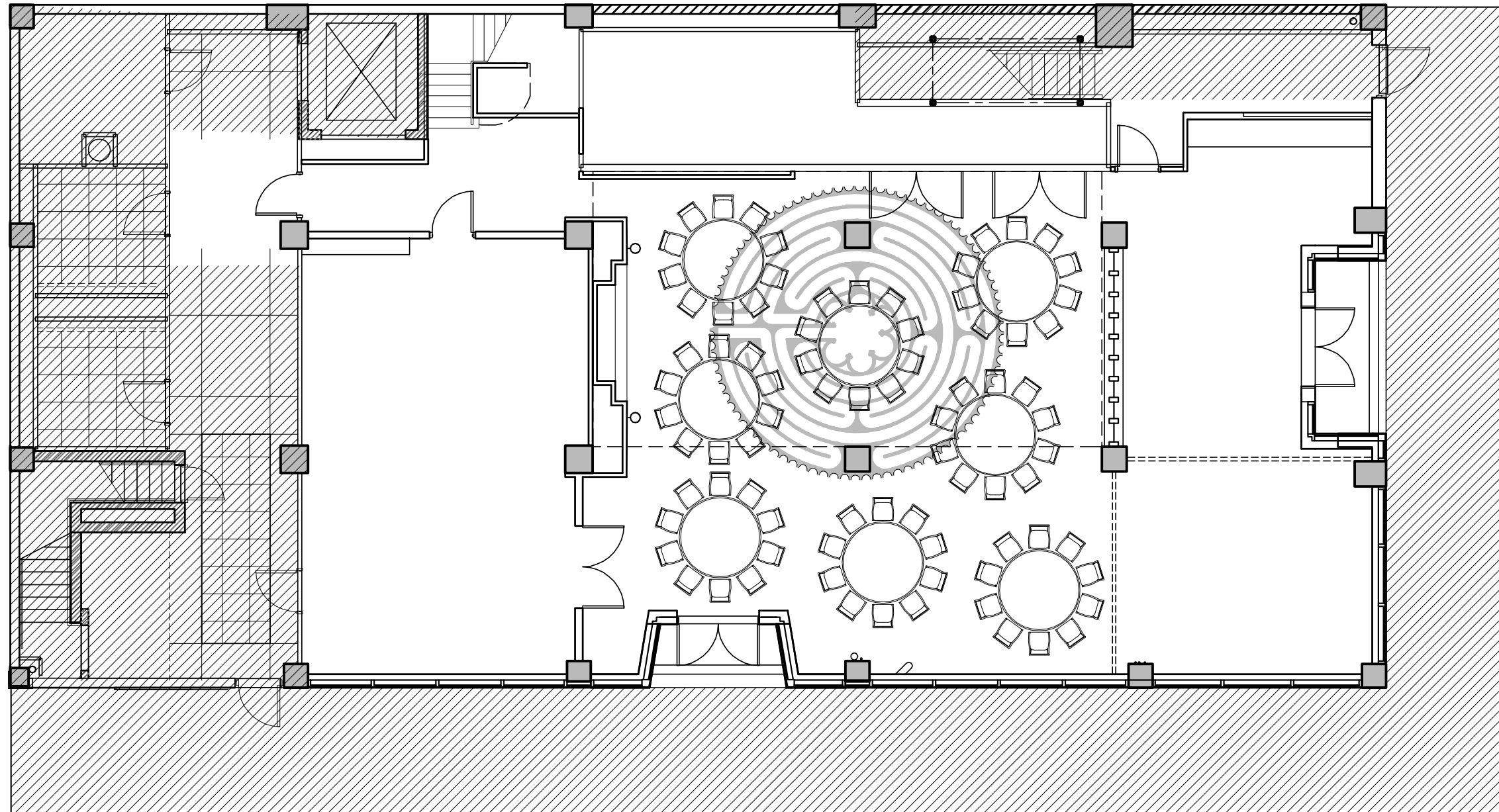


SECOND FLOOR

ROOM	SQUARE FOOTAGE	DIMENSIONS	THEATRE	ROUNDS 72" 10 PER	RECEPTION	CLASSROOM	BOARD	U-SHAPE
Consultation Room	108 S.F.	10' 1" x 10' 8"	8	N/A	N/A	N/A	6	N/A
Conference Room	231 S.F.	21' 9" x 10' 8"	22	N/A	N/A	N/A	14	N/A
Art Room	205 S.F.	13' 1" x 15' 8"	20	N/A	25	12	12	9
Meeting Room	203 S.F.	13' 1" x 16' 2"	14	N/A	N/A	N/A	12	9
Meditation Room	165 S.F.	16' 1" x 10' 6"	20	N/A	N/A	N/A	N/A	N/A



HINES CENTER

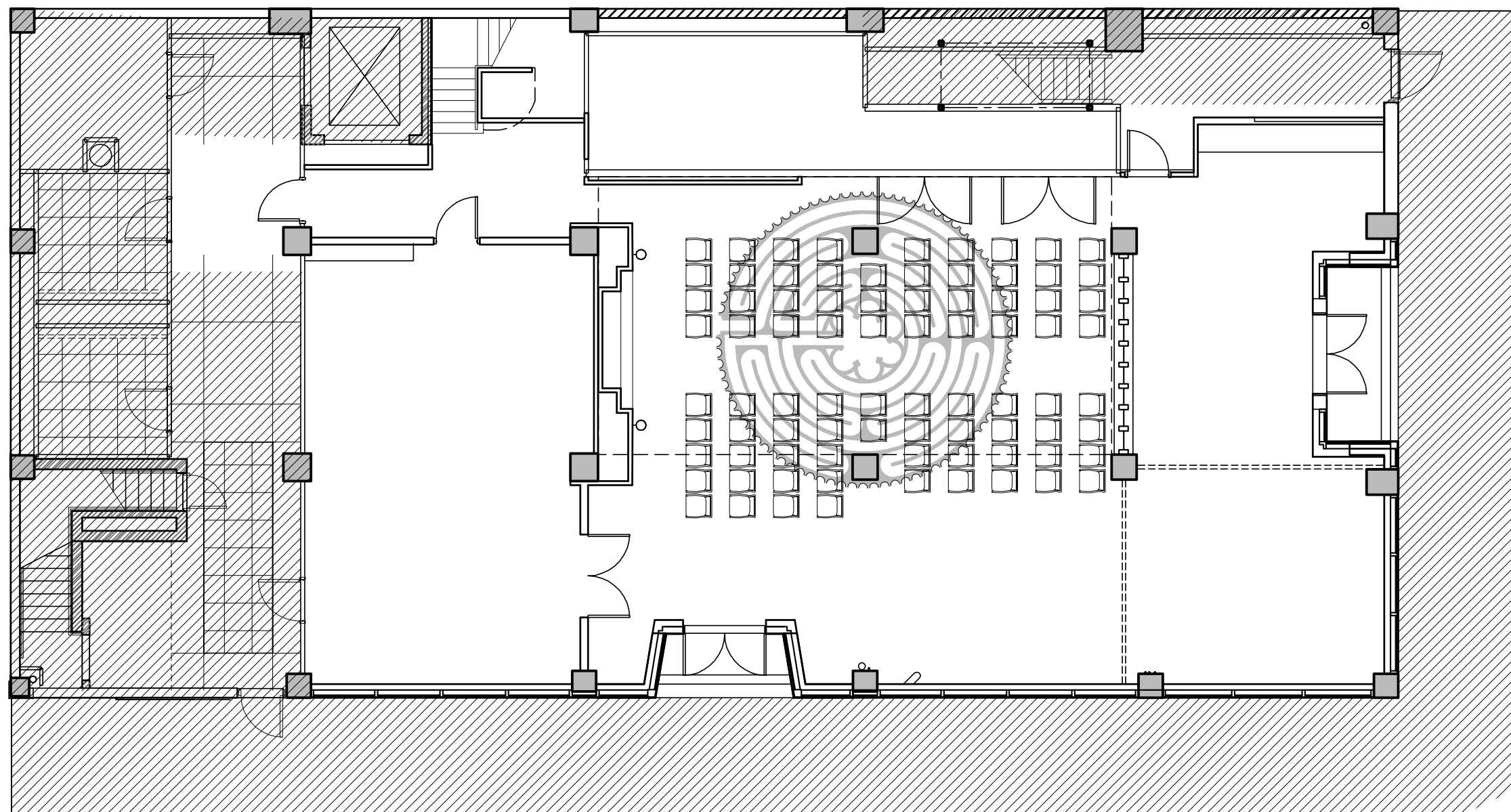


FIRST FLOOR - TABLE + CHAIRS LAYOUT

8 Tables, 80 Chairs



HINES CENTER

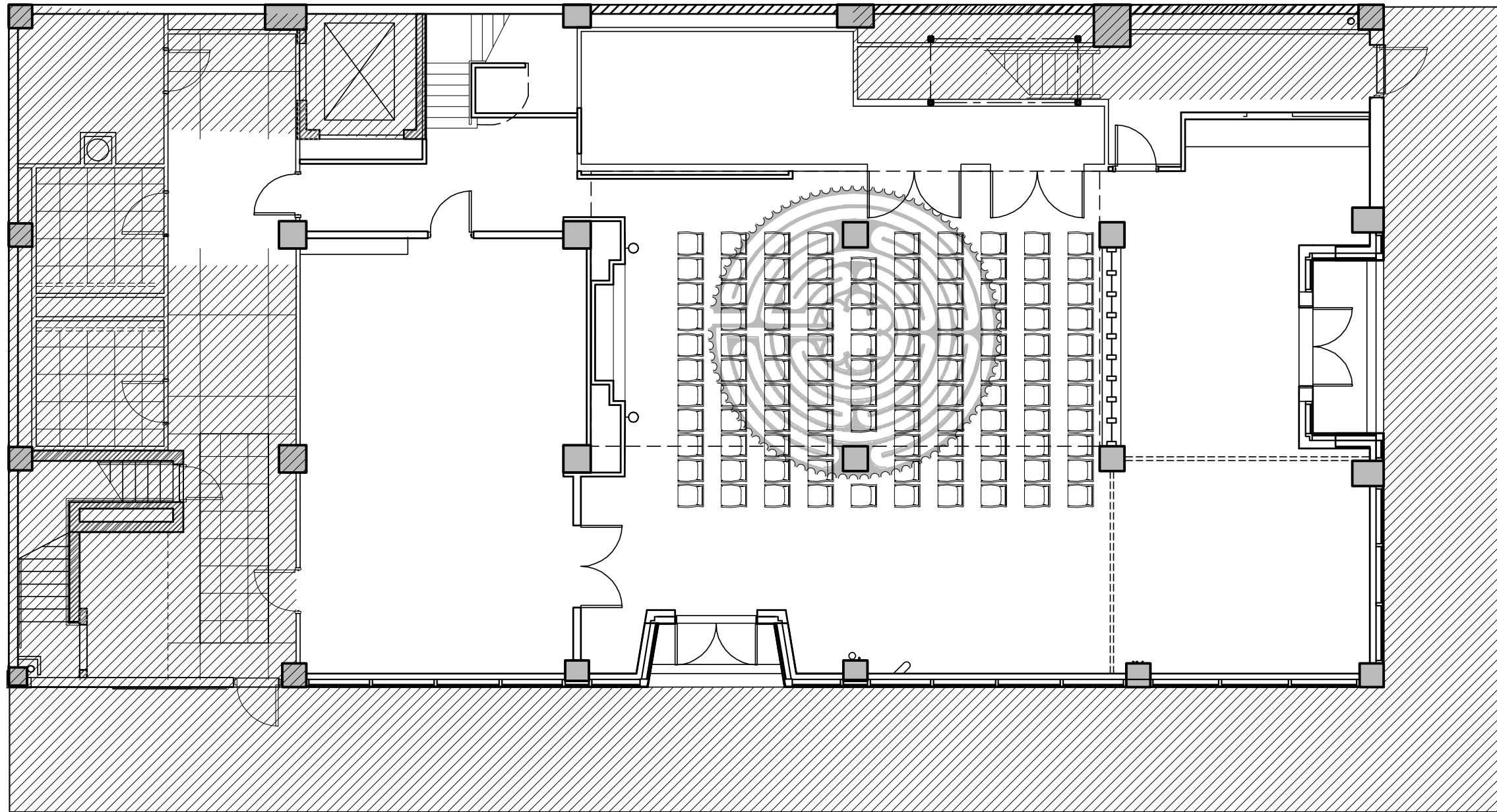


FIRST FLOOR - THEATER SEATING LAYOUT A

81 Chairs



HINES CENTER



FIRST FLOOR - THEATER SEATING LAYOUT B

107 Chairs